

zooflagellates - choanoflagellates

Acanthoeca sp.

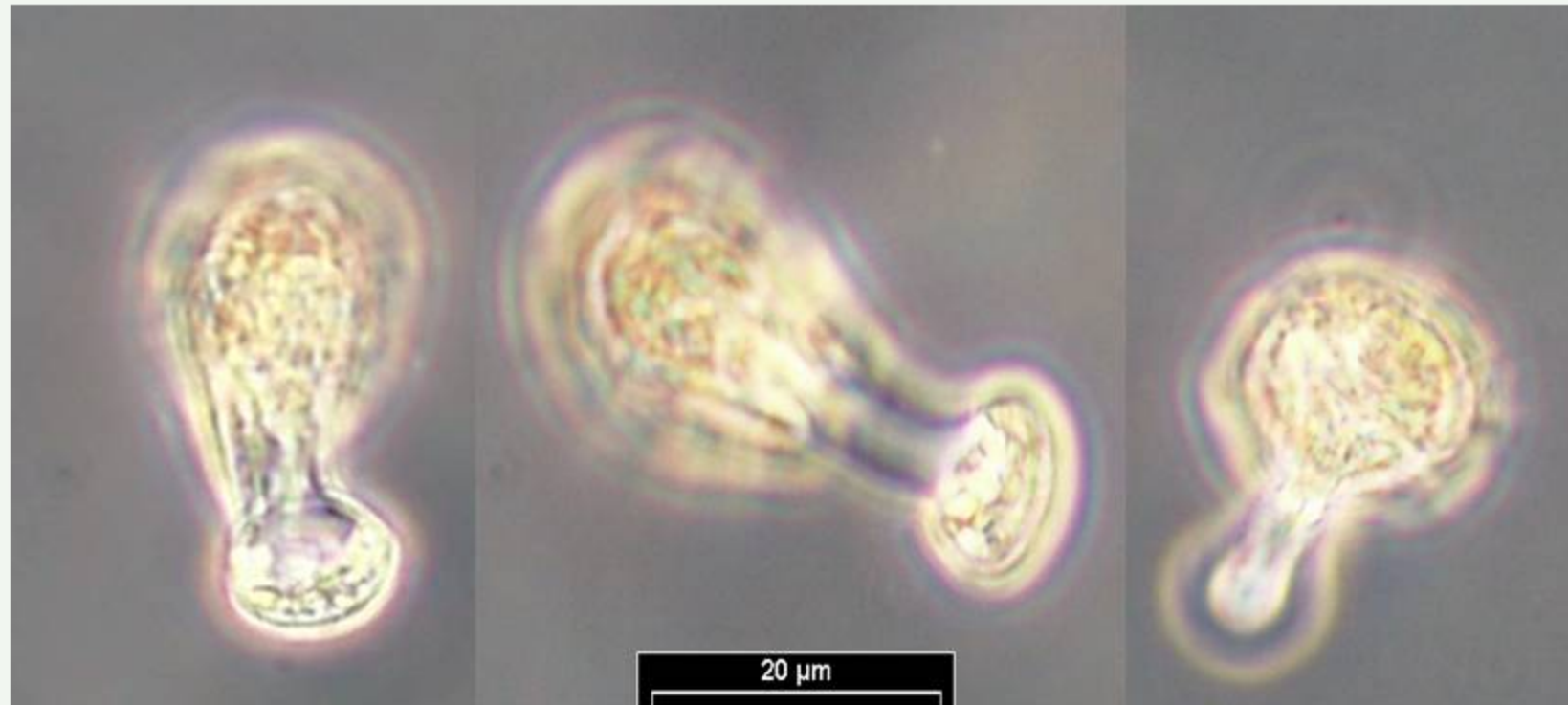
abundance: spring, summer
lorica width: 8 – 17 μm



LM (coastal station Heiligendamm)

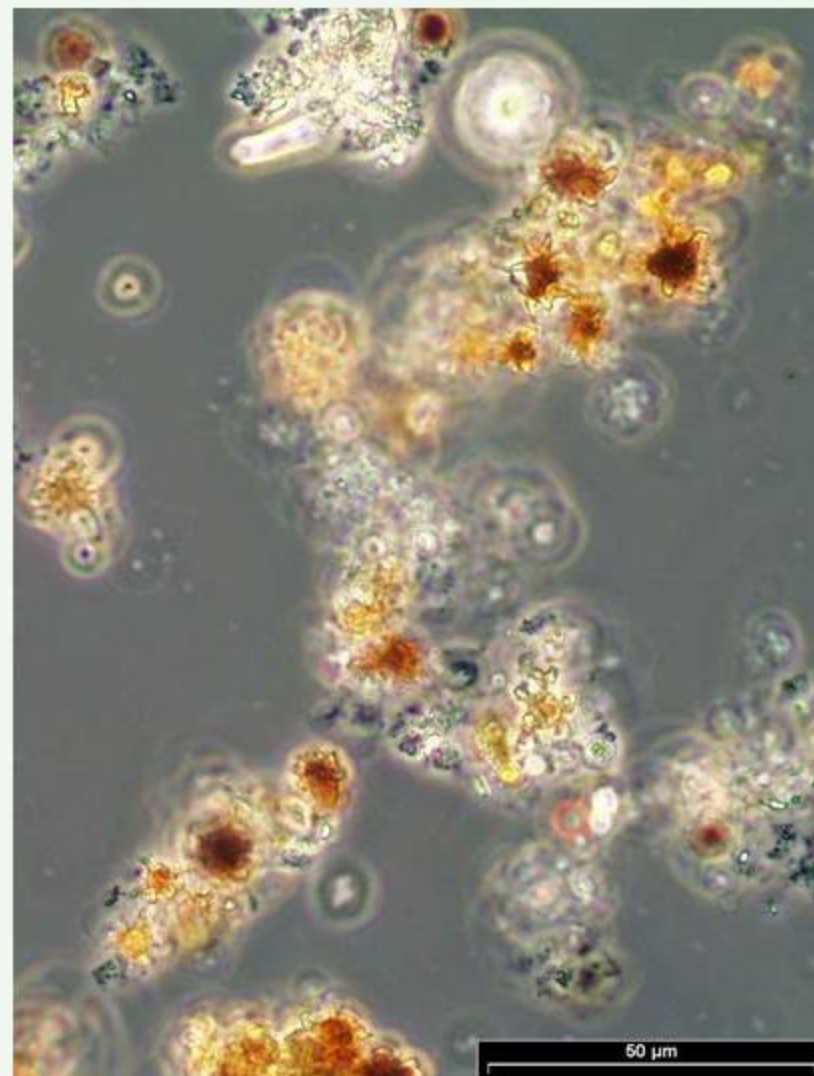
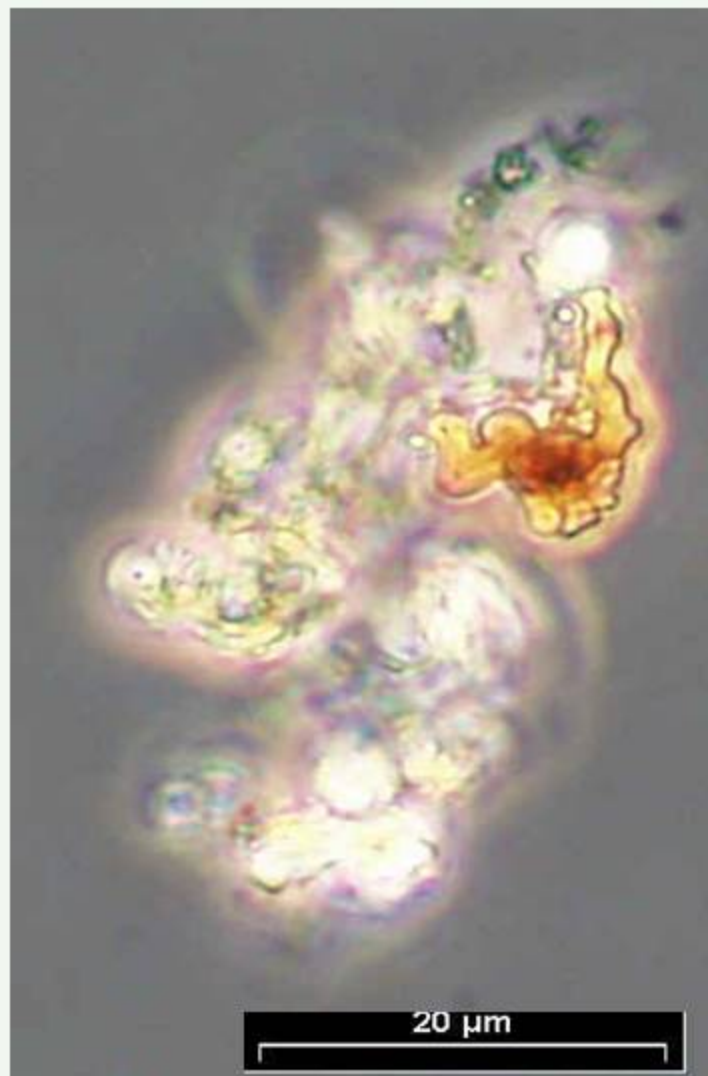
Amoeba

abundance: summer
life-form: solitary
length: 50µm



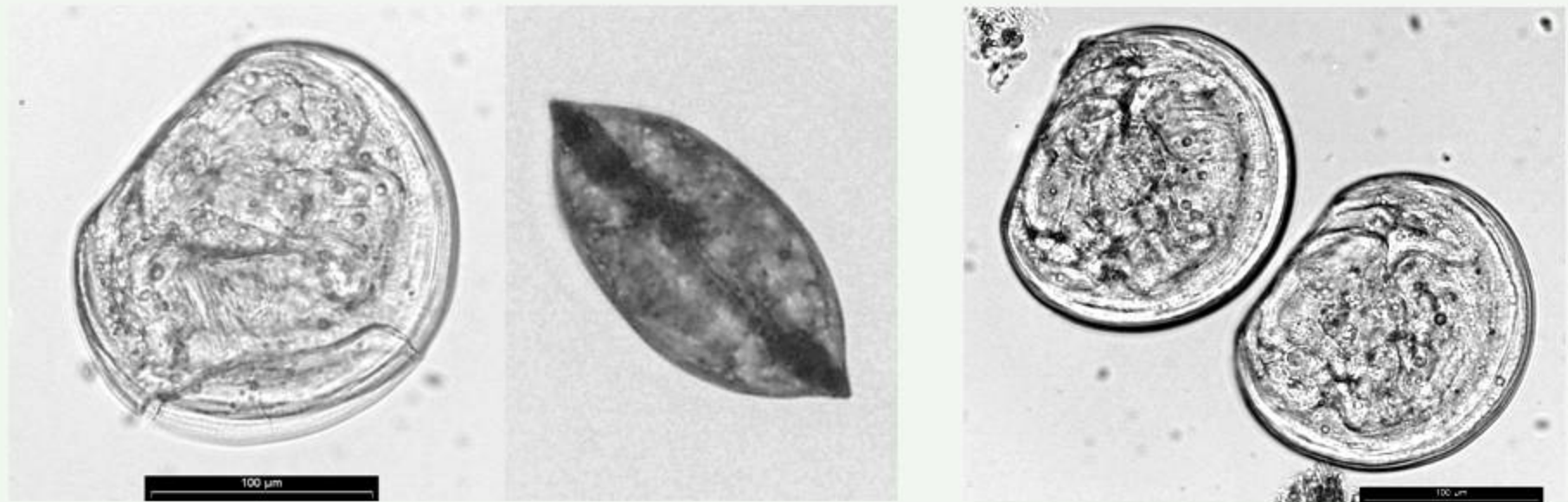
LM (coastal station Heiligendamm)

bacterial manganese aggregation



LM (Gotland Sea, sediment trap)

Bivalvia larvae

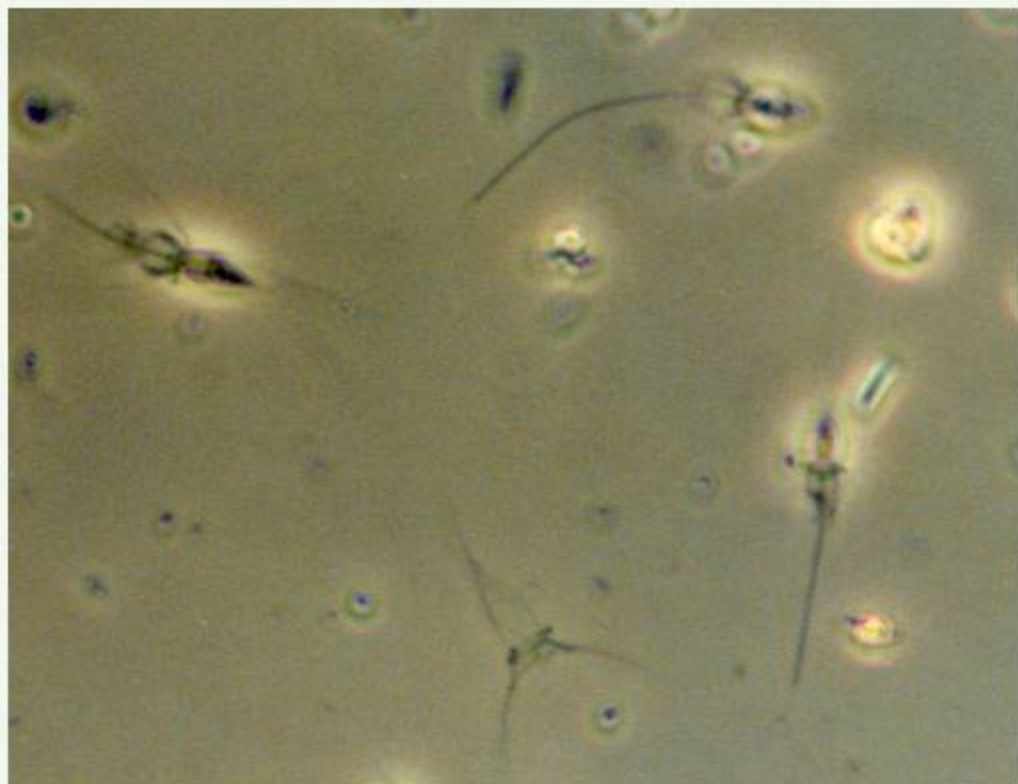


LM (coastal station Heiligendamm)

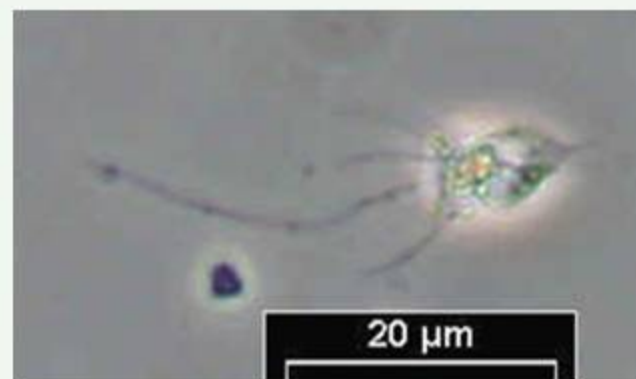
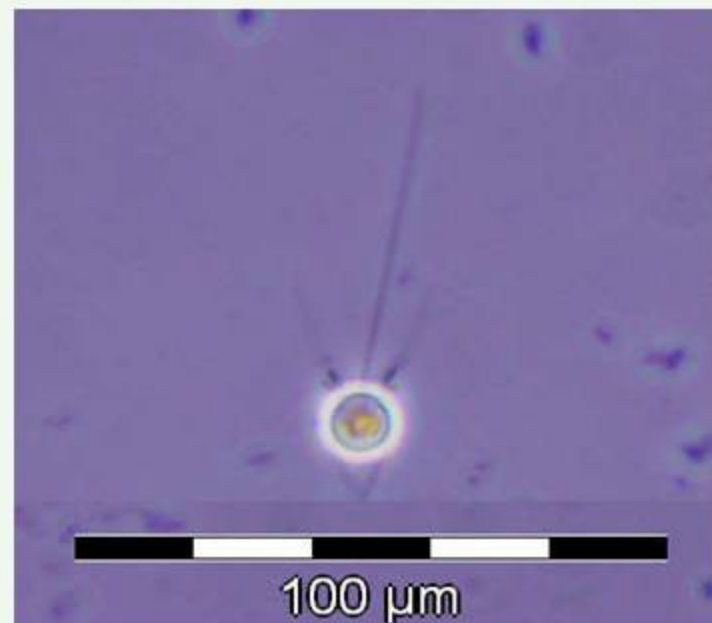
zooflagellates - choanoflagellates

Calliacantha natans

abundance: spring, summer
lorica length: 17 - 26 μm



LM (Kiel Bight)

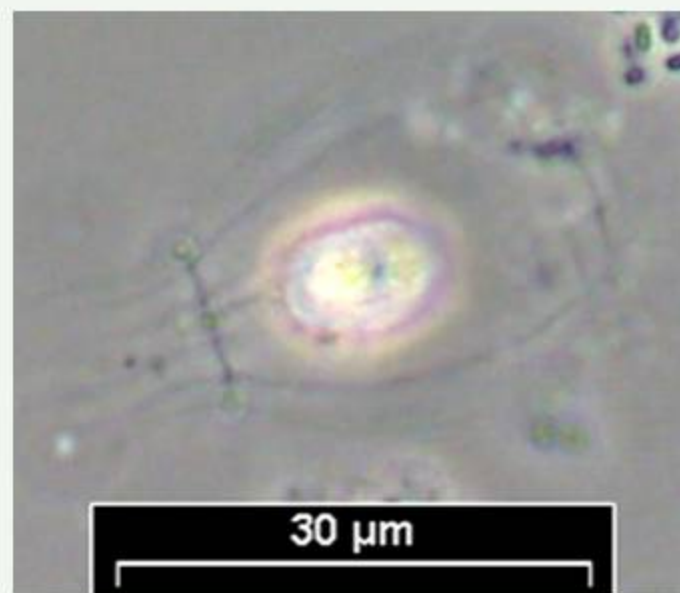
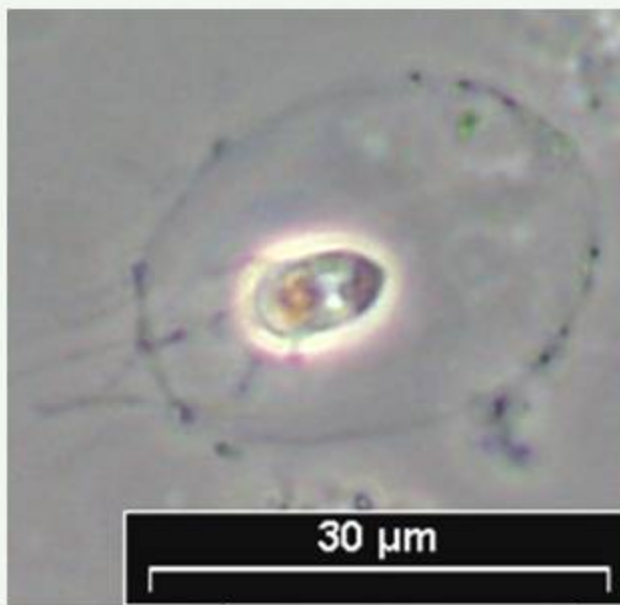


LM (coastal station Heiligendamm)

zooflagellates - choanoflagellates

Diaphanoeca grandis

abundance: spring, summer
lorica length: 24 - 38 μm

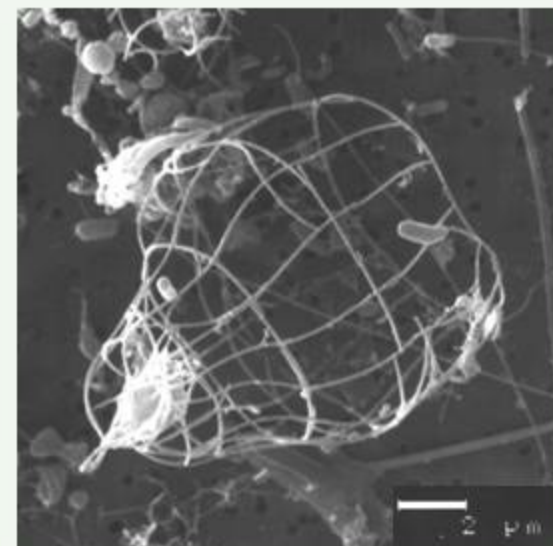


LM (Gotland Sea)

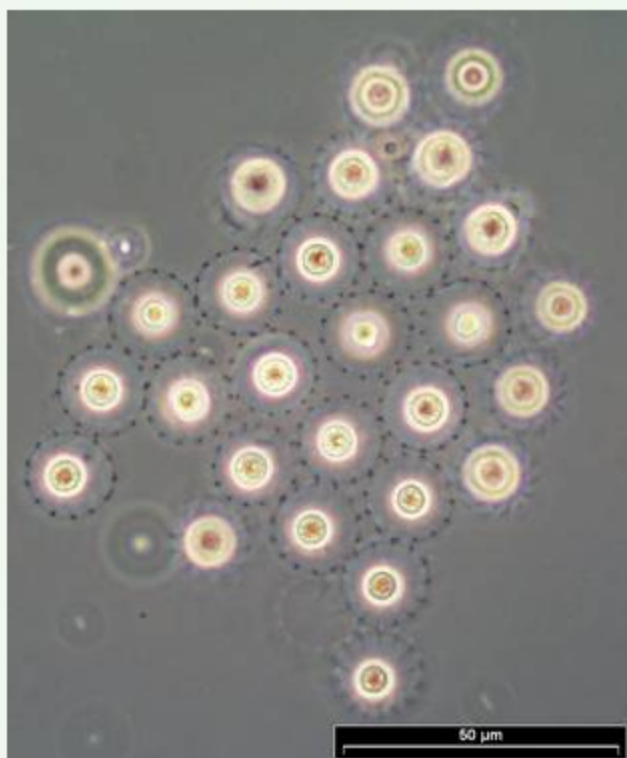
zooflagellates - choanoflagellates

Diaphanoeca sphaerica

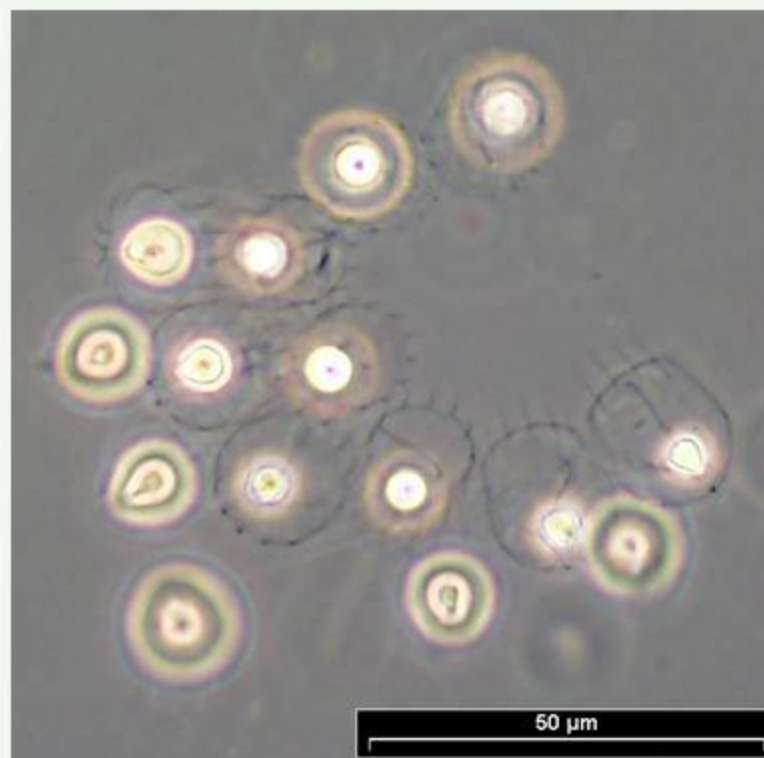
abundance: spring, summer
lorica length: 20 - 35 μm



REM (Kiel Bight)



LM (coastal station Heiligendamm)

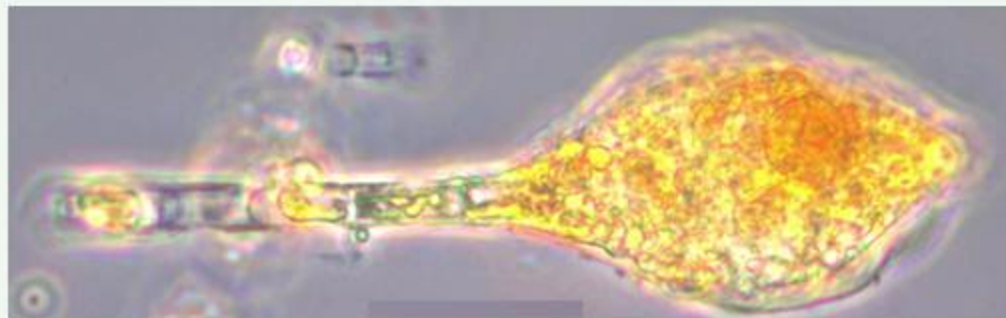


LM (Gotland Sea)

phytoplankton – Ebridea

Ebria tripartita

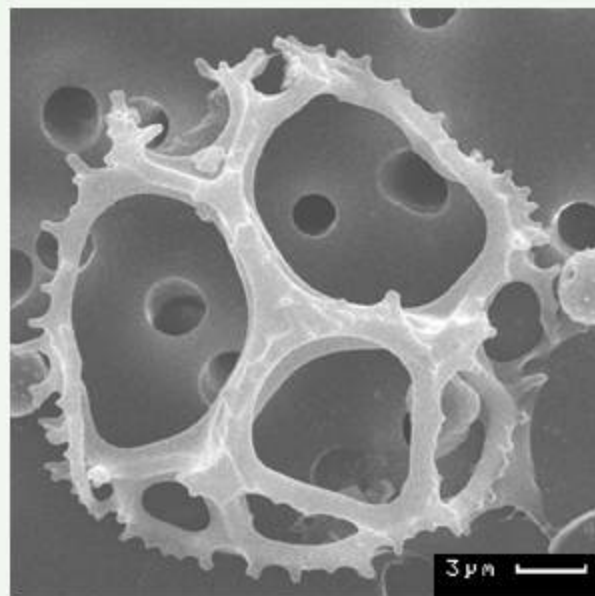
abundance: spring
life-form: solitary
cell-length: 20 - 30 μm
cell-width: 20 - 25 μm



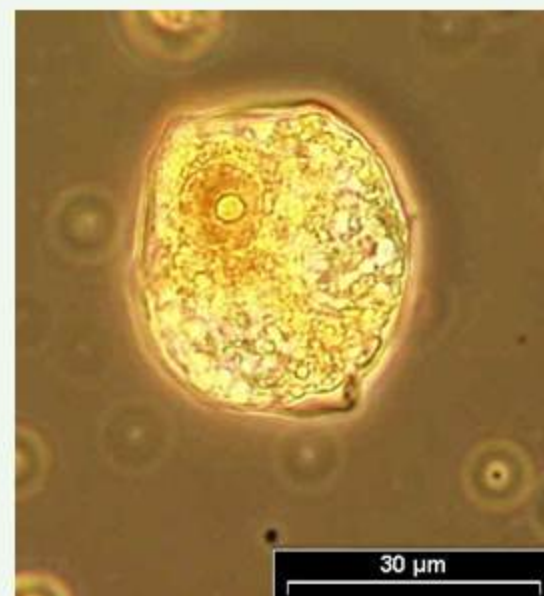
LM (Lübeck Bight) *E. tripartita* feeding on *Skeletonema costatum*



LM (Oder Bight) living cell

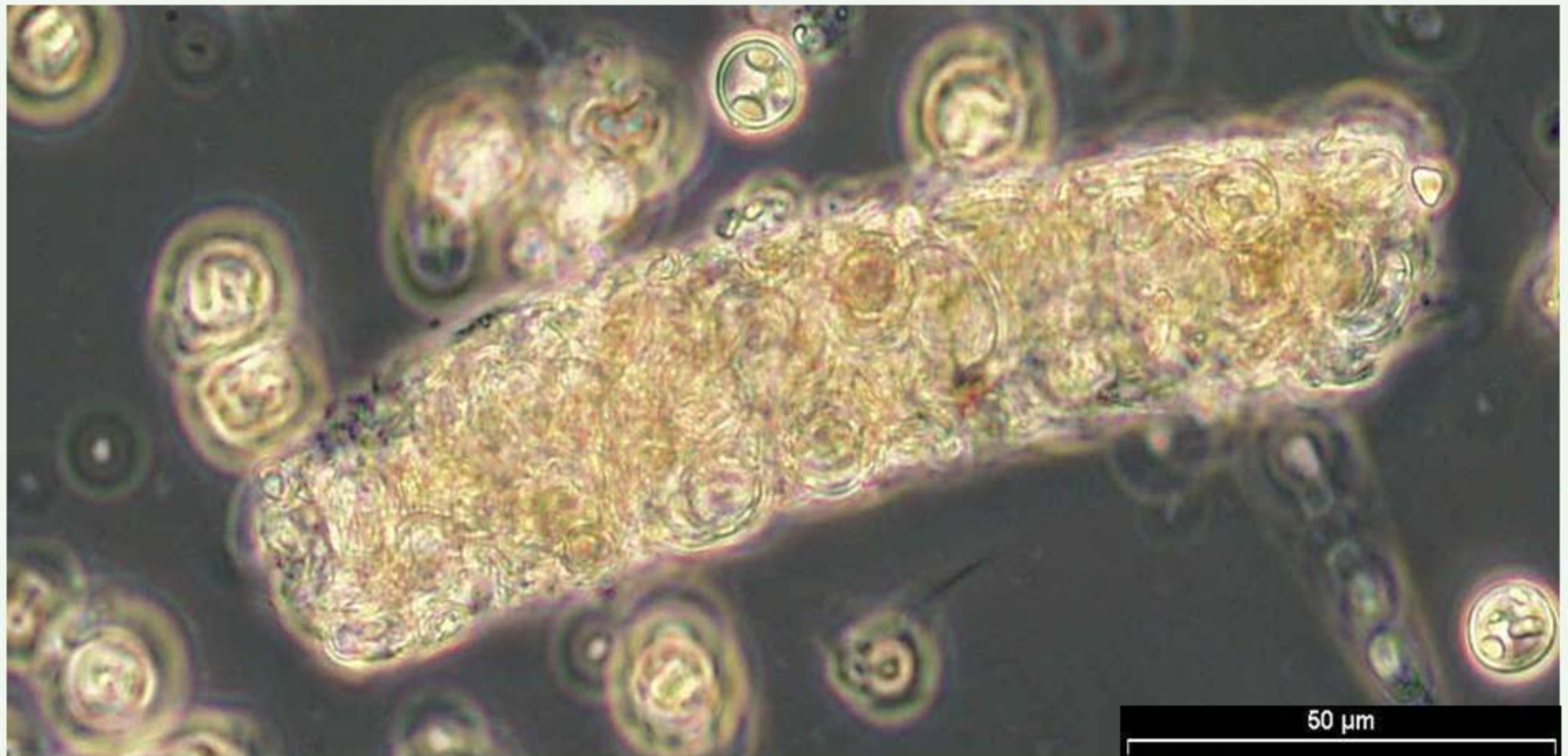


REM (Oder Bight)



LM (Oder Bight) Lugol fixed

zooplankton - faecal pellet



LM (Gotland Sea), faecal pellet filled with small diatoms (*Thalassiosira levanderi*)

zooplankton - ciliates

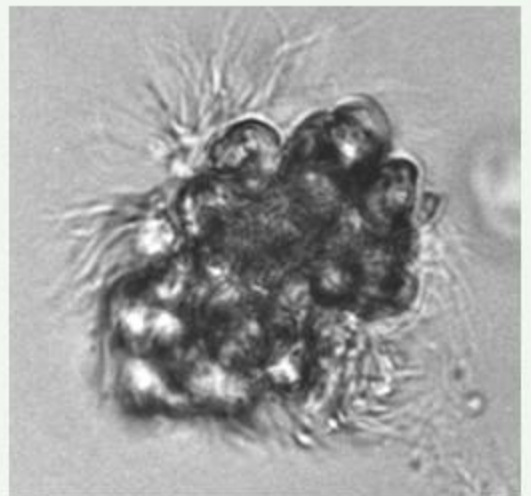
Myrionecta rubra

abundance: spring, summer, autumn

size: 15 - 70 μm



LM (coastal station Heiligendamm)
preserved with Lugol's solution



LM (Kiel Bight)
preserved with formaldehyde

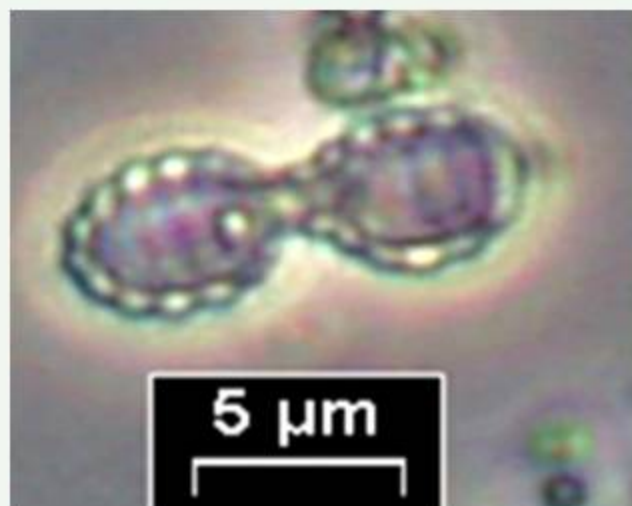
Amoeba

Paulinella ovalis

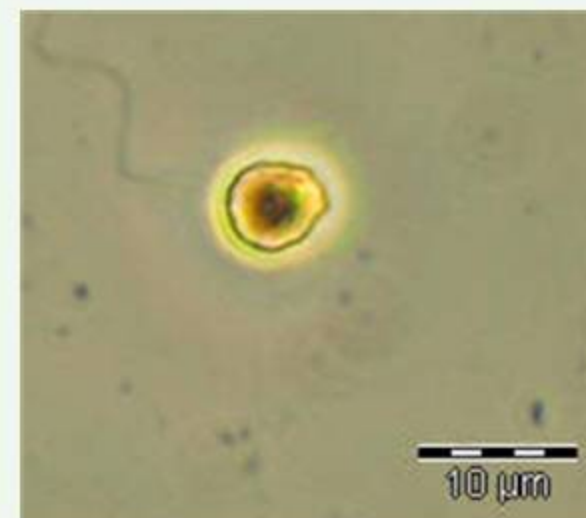
abundance: autumn

life-form: solitary

size of lorica: 3 - 4 x 4 - 5 μm



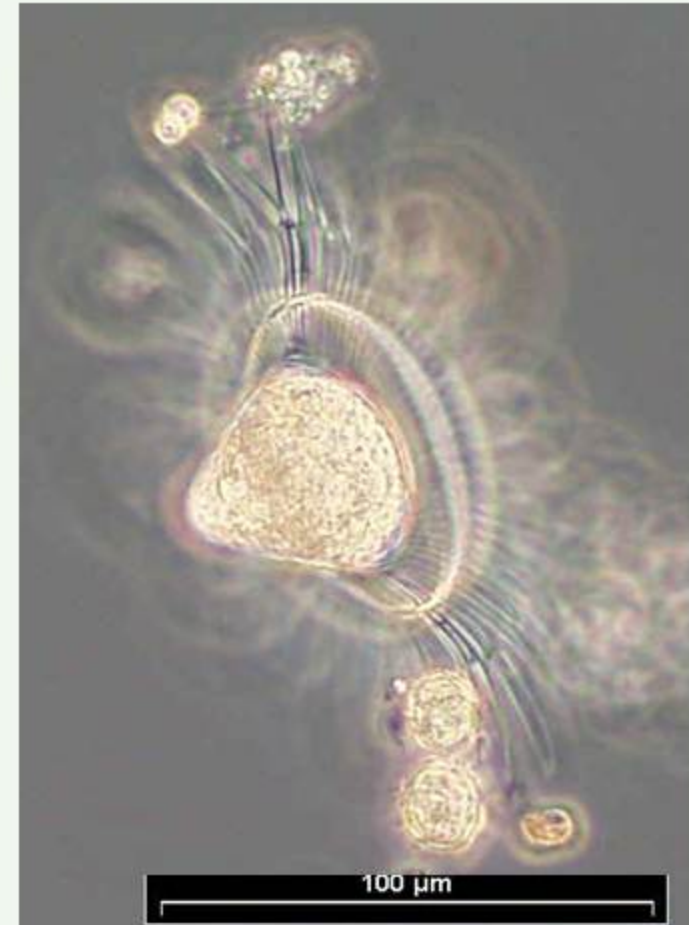
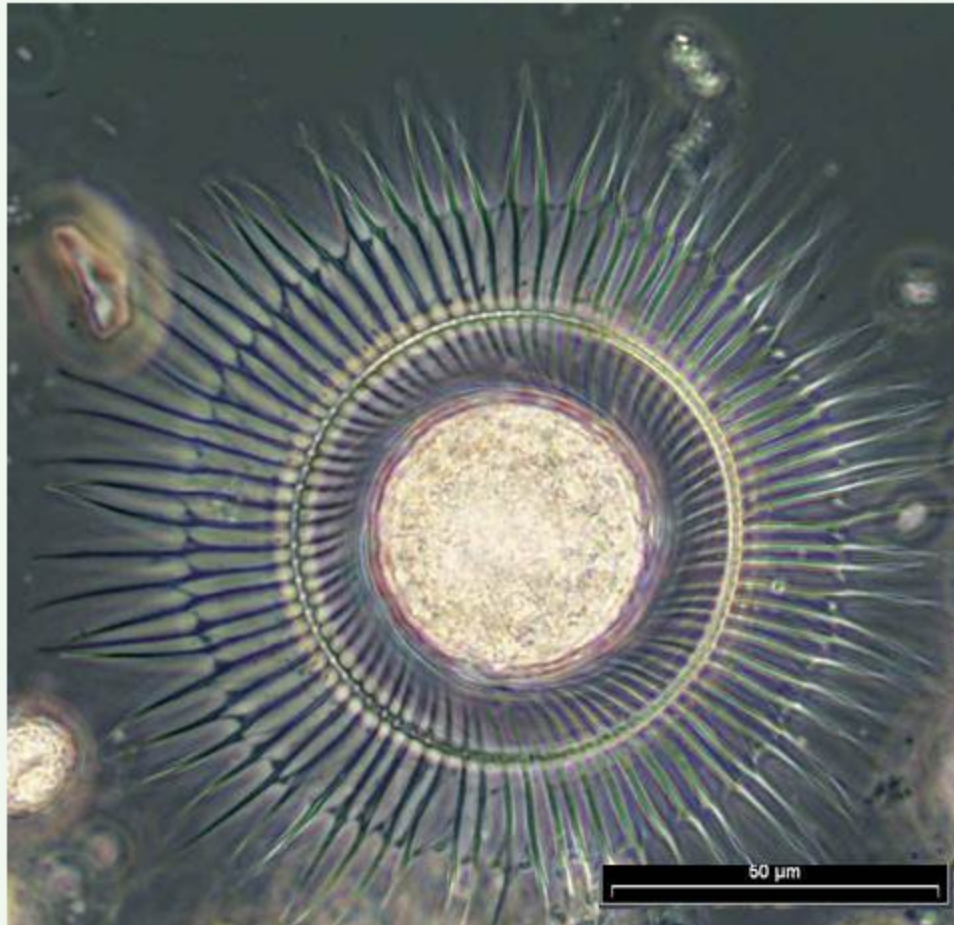
LM (coastal station Heiligendamm)



LM (Gotland Sea, Formol preserved)

zooplankton

Radiosperma corbiferum



LM (Gotland Sea, sediment trap)